



**ESA** [www.esatech.net](http://www.esatech.net)

**Erich Seamon and Associates LLC**

Geographic Information Systems analysis development design

## ESA 2009 Datasheet GEOSPATIAL FORENSICS

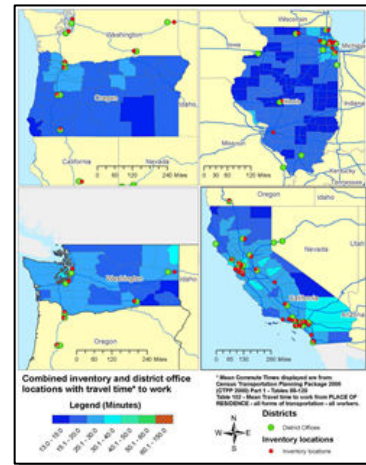
### ESA Geospatial Forensics and Litigation Support

Geospatial data analysis of provided legal data – for comparative and geo-analytical examination

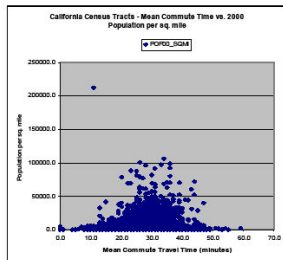
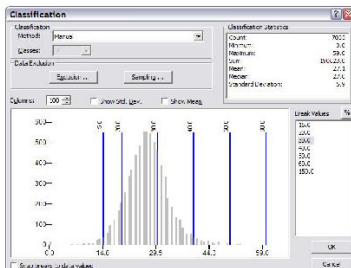
*Example: a class action lawsuit involves 1000 litigants, spread out geographically. ESA can integrate existing information about litigants, and then create a geographic model to compare geostatistical relationships between location and other outcomes.*

Comparison of existing geospatial information from a legal case to expected data outcomes

*Example: A plaintiff is examining information provided by the defendant, which consists of information related to widget failure at certain factories, with known addresses. ESA can use this preliminary information to develop a “geographic baseline” for the known widget failures distribution geographically – and then compare that geographic distribution to known collected data.*



Map CA2 – California Census Tract Mean Commute Times



Geospatial re-engineering of situational and chronological components of legal cases

*Example: A plaintiff is attempting describe a complex case that involves many defendants and many locations. Similar to the previous example – ESA can develop a geographic model of your information – and leverage this model to provide situational and temporal review – eg. Reviewing the location of cars during an accident – or providing an overview of factory and distribution locations compared to consumer widget failures – by geography.*

### ESA Expert Witness Testimony Services

ESA's Principal, Erich Seamon, provides direct expert witness testimony services in conjunction with ESA's geospatial data forensics and litigation support. Please see [ESA's 2009 Rate Schedule](#) for hourly rates, or please contact us at **415.315.9020** for more information.



**ESRI**  
Technology  
AUTHORIZED  
BUSINESS PARTNER

**Erich Seamon and Associates LLC**  
50 California Street Suite 1500 San Francisco, CA 94111 415.315.9020  
[www.esatech.net](http://www.esatech.net)